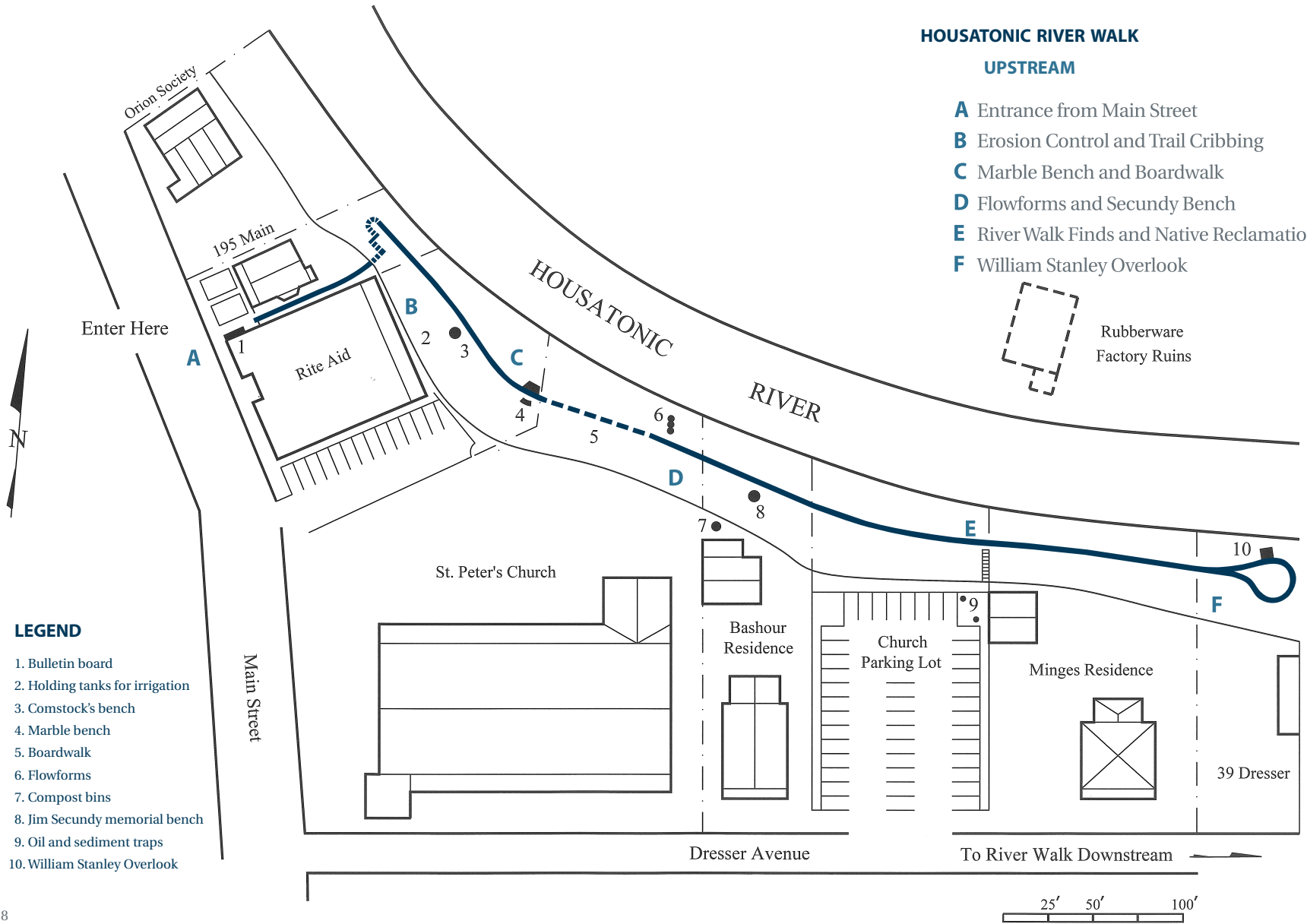
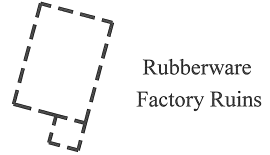


HOUSATONIC RIVER WALK

UPSTREAM

- A** Entrance from Main Street
- B** Erosion Control and Trail Cribbing
- C** Marble Bench and Boardwalk
- D** Flowforms and Secundy Bench
- E** River Walk Finds and Native Reclamation
- F** William Stanley Overlook

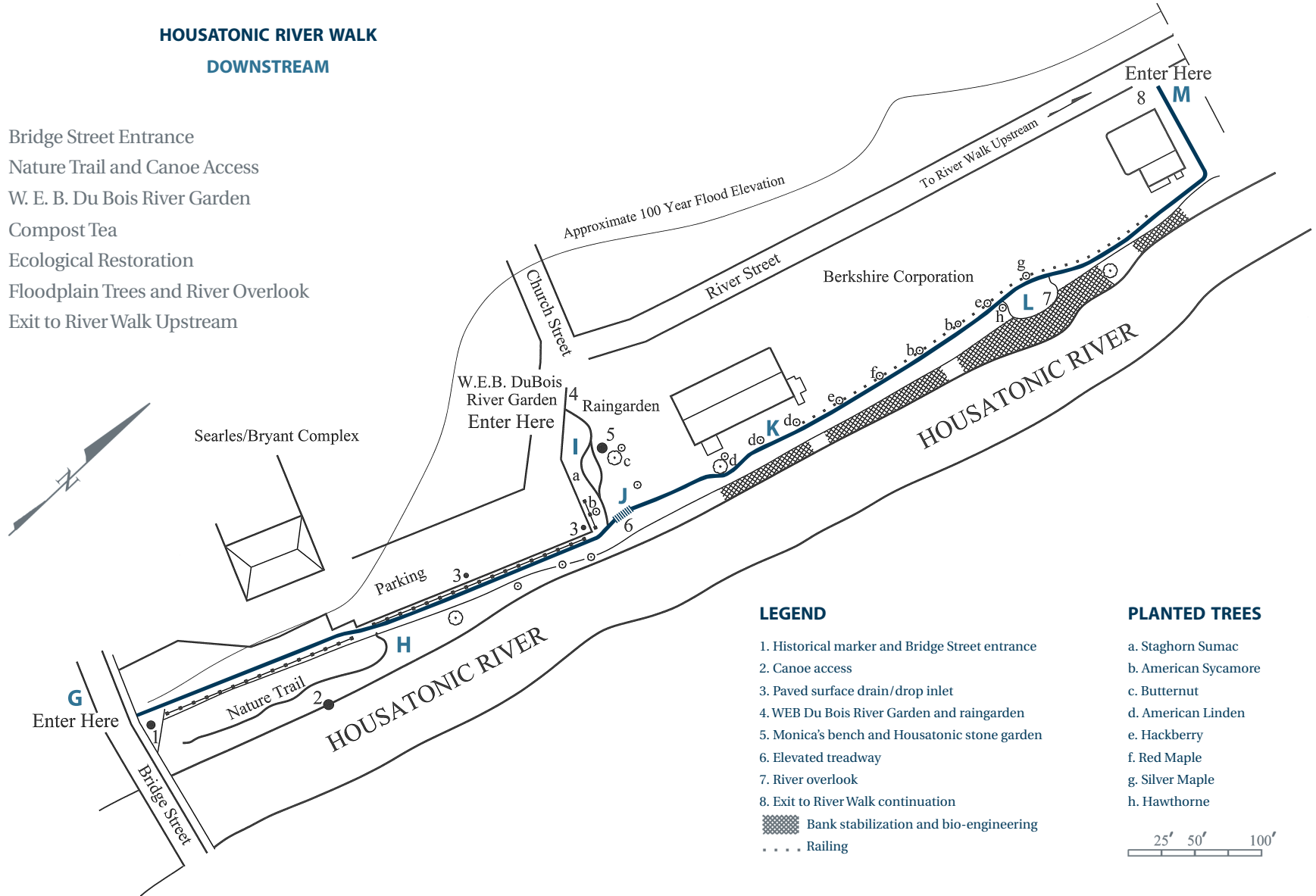


LEGEND



1. Bulletin board
2. Holding tanks for irrigation
3. Comstock's bench
4. Marble bench
5. Boardwalk
6. Flowforms
7. Compost bins
8. Jim Secundy memorial bench
9. Oil and sediment traps
10. William Stanley Overlook

HOUSATONIC RIVER WALK DOWNSTREAM

- G** Bridge Street Entrance
- H** Nature Trail and Canoe Access
- I** W. E. B. Du Bois River Garden
- J** Compost Tea
- K** Ecological Restoration
- L** Floodplain Trees and River Overlook
- M** Exit to River Walk Upstream



LEGEND

1. Historical marker and Bridge Street entrance
2. Canoe access
3. Paved surface drain/drop inlet
4. WEB Du Bois River Garden and raingarden
5. Monica's bench and Housatonic stone garden
6. Elevated treadway
7. River overlook
8. Exit to River Walk continuation
-  Bank stabilization and bio-engineering
-  Railing

PLANTED TREES

- a. Staghorn Sumac
- b. American Sycamore
- c. Butternut
- d. American Linden
- e. Hackberry
- f. Red Maple
- g. Silver Maple
- h. Hawthorne

